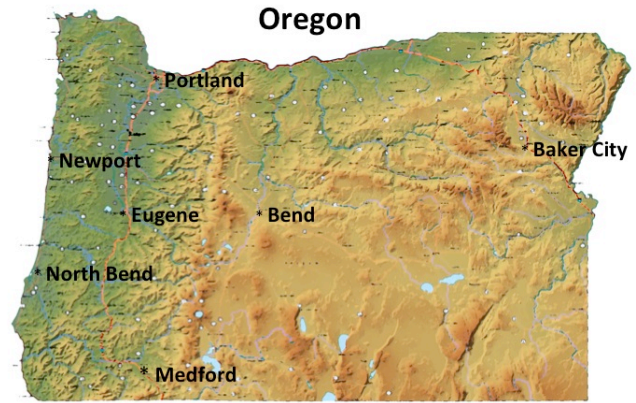


## Oregon Climate Data

1981-2010 Climate Data Monthly Normals  
<http://www.ncdc.noaa.gov/cdo-web/datatools/normal>

Examine the climate data from cities in Oregon and fill out the worksheet below.



Location	Distance from the Ocean (mi)	Lowest Min Temp (°F)	Lowest Avg Temp (°F)	Highest Max Temp (°F)	Highest Avg Temp (°F)	Lowest Precip (in)	Highest Precip (in)
Baker City	300						
Bend	140						
Eugene	50						
Medford	80						
Newport	0						
North Bend	0						
Portland	62						

What seasonal temperature patterns do you see? In which months are the temperatures the lowest? Which months have the highest temperatures?

What seasonal precipitation patterns do you see? Which months are the wettest? Which are the driest?

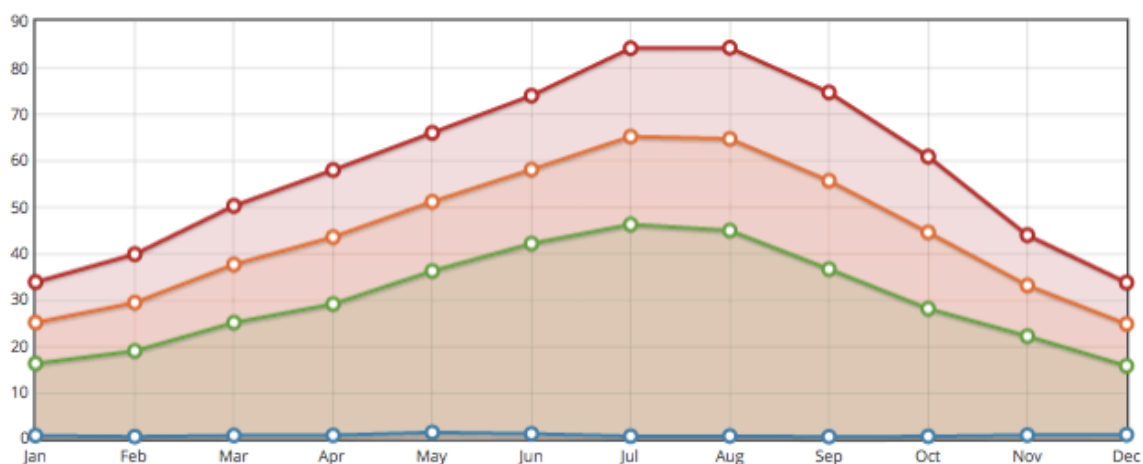
How does the climate in cities close to the ocean differ from those that are far from the ocean? What accounts for these differences?

Choose another city in Oregon and predict what temperature and precipitation patterns you expect to see. Search for data online to see if your predictions were correct:

<http://www.ncdc.noaa.gov/cdo-web/datatools/normal>

# BAKER CITY MUNICIPAL AIRPORT, OR US

[View Station Details](#) | [View Station Report](#)



MONTH	• PRECIP (IN)	• MIN TMP (°F)	• AVG TMP (°F)	• MAX TMP (°F)
01	0.80	16.3	25.1	33.8
02	0.58	19.0	29.4	39.8
03	0.82	25.1	37.6	50.2
04	0.85	29.1	43.5	57.9
05	1.48	36.2	51.1	65.9
06	1.18	42.1	58.0	73.9
07	0.65	46.2	65.1	84.1
08	0.71	44.9	64.6	84.2
09	0.55	36.6	55.6	74.6
10	0.63	28.1	44.5	60.8
11	0.90	22.2	33.1	43.9
12	0.98	15.8	24.8	33.7

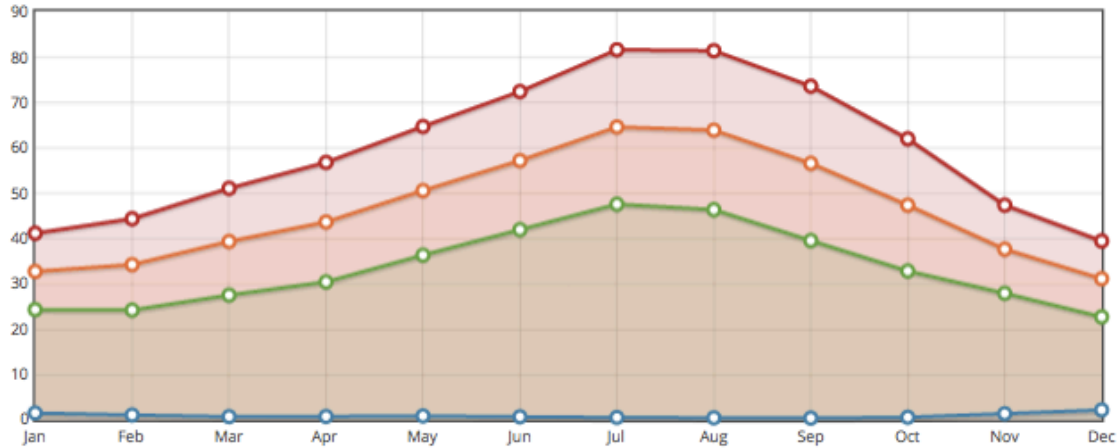
## Monthly Normals

Generated from 1981-2010 Climate Data

<http://www.ncdc.noaa.gov/cdo-web/datatools/normals>

# BEND, OR US

[View Station Details](#) | [View Station Report](#)



MONTH	• PRECIP (IN)	• MIN TMP (°F)	• AVG TMP (°F)	• MAX TMP (°F)
01	1.53	24.3	32.7	41.1
02	1.09	24.2	34.2	44.3
03	0.73	27.5	39.3	51.0
04	0.78	30.4	43.6	56.7
05	0.89	36.3	50.5	64.6
06	0.70	41.9	57.1	72.3
07	0.56	47.5	64.5	81.5
08	0.48	46.3	63.8	81.3
09	0.41	39.5	56.5	73.5
10	0.60	32.8	47.3	61.9
11	1.39	27.9	37.6	47.3
12	2.20	22.7	31.1	39.4

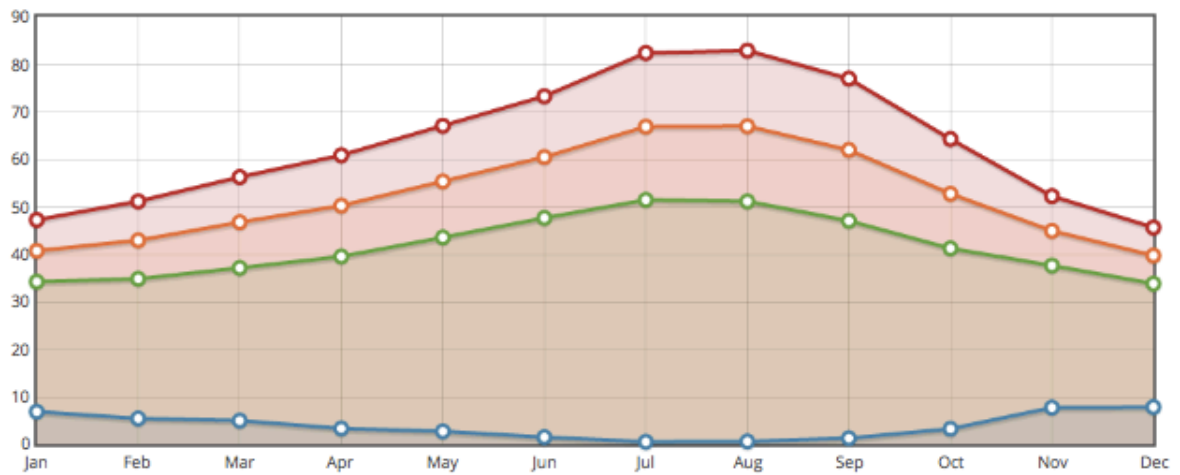
## Monthly Normals

Generated from 1981-2010 Climate Data

<http://www.ncdc.noaa.gov/cdo-web/datatools/normals>

# EUGENE MAHLON SWEET AIRPORT, OR US

[View Station Details](#) | [View Station Report](#)



MONTH	● PRECIP (IN)	● MIN TMP (°F)	● AVG TMP (°F)	● MAX TMP (°F)
01	6.87	34.2	40.7	47.2
02	5.43	34.8	42.9	51.1
03	4.99	37.1	46.7	56.2
04	3.33	39.5	50.2	60.8
05	2.74	43.5	55.3	67.0
06	1.50	47.6	60.4	73.2
07	0.54	51.4	66.8	82.3
08	0.61	51.1	66.9	82.8
09	1.29	47.0	61.9	76.9
10	3.25	41.2	52.7	64.2
11	7.72	37.6	44.9	52.2
12	7.83	33.8	39.7	45.6

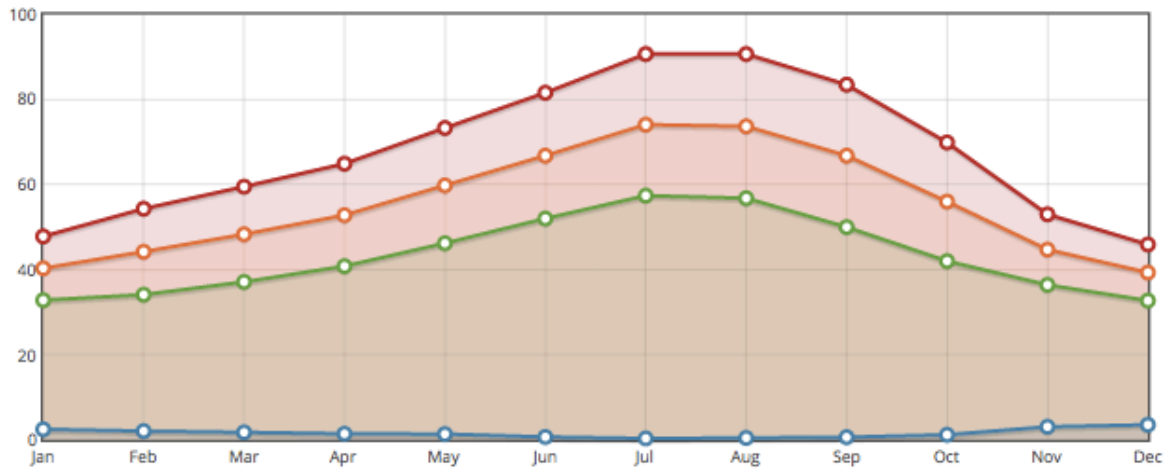
## Monthly Normals

Generated from 1981-2010 Climate Data

<http://www.ncdc.noaa.gov/cdo-web/datatools/normals>

# MEDFORD ROGUE VALLEY INTERNATIONAL AIRPORT, OR US

[View Station Details](#) | [View Station Report](#)



MONTH	● PRECIP (IN)	● MIN TMP (°F)	● AVG TMP (°F)	● MAX TMP (°F)
01	2.43	32.8	40.3	47.8
02	2.01	34.1	44.2	54.3
03	1.71	37.1	48.3	59.5
04	1.38	40.8	52.8	64.9
05	1.31	46.2	59.8	73.3
06	0.62	52.0	66.8	81.6
07	0.28	57.4	74.1	90.7
08	0.40	56.8	73.7	90.7
09	0.57	50.0	66.8	83.5
10	1.13	42.0	56.0	69.9
11	3.02	36.4	44.7	53.0
12	3.49	32.7	39.3	45.9

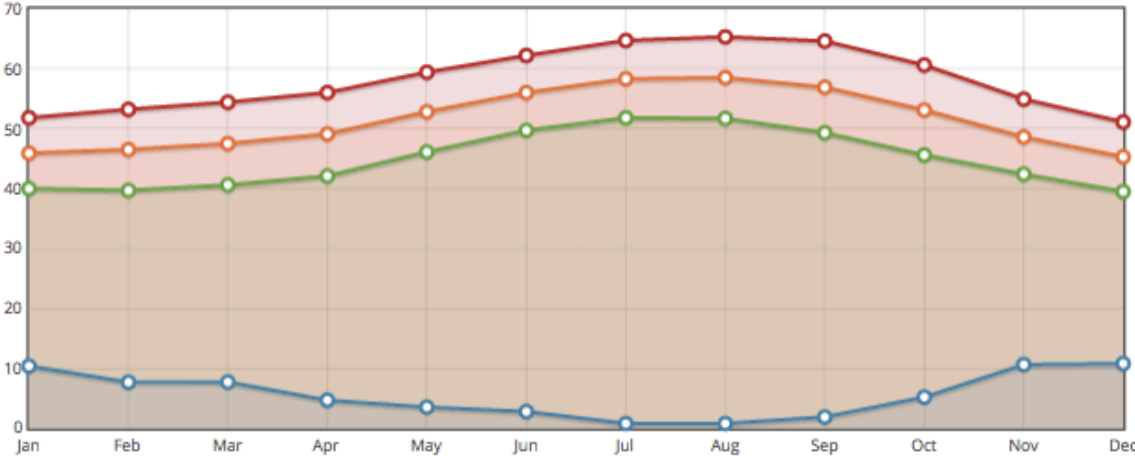
## Monthly Normals

Generated from 1981-2010 Climate Data

<http://www.ncdc.noaa.gov/cdo-web/datatools/normals>

# NEWPORT, OR US

[View Station Details](#) | [View Station Report](#)

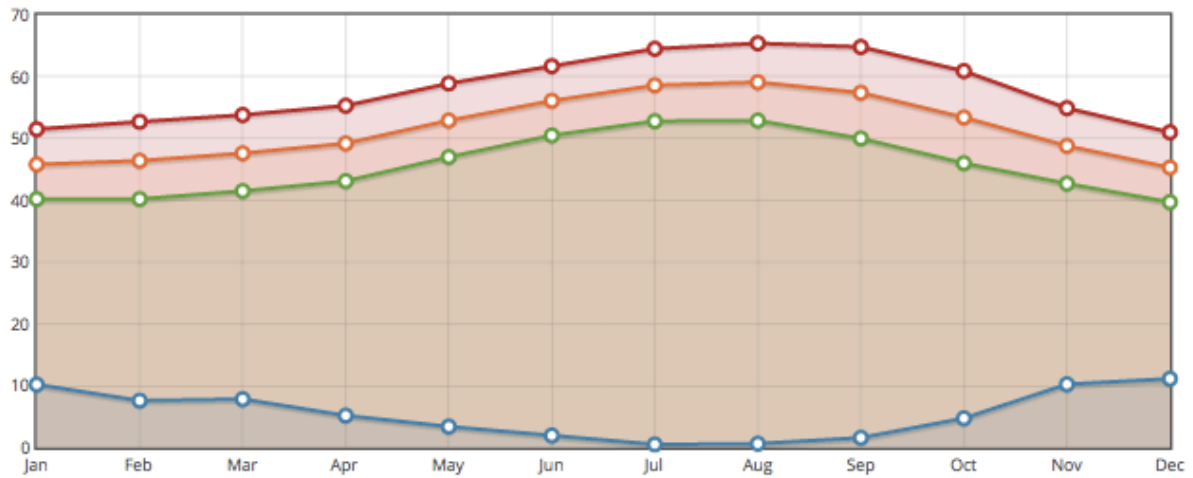


MONTH	• PRECIP (IN)	• MIN TMP (°F)	• AVG TMP (°F)	• MAX TMP (°F)
01	10.41	40.0	45.9	51.8
02	7.72	39.7	46.5	53.2
03	7.75	40.6	47.5	54.4
04	4.71	42.1	49.1	56.0
05	3.56	46.1	52.8	59.4
06	2.82	49.7	56.0	62.2
07	0.83	51.8	58.3	64.7
08	0.82	51.7	58.5	65.3
09	1.91	49.3	56.9	64.6
10	5.23	45.6	53.1	60.6
11	10.65	42.4	48.6	54.9
12	10.82	39.5	45.3	51.1

Monthly Normals  
 Generated from 1981-2010 Climate Data  
<http://www.ncdc.noaa.gov/cdo-web/datatools/normals>

# NORTH BEND SOUTHWEST OREGON REGIONAL AIRPORT, OR US

[View Station Details](#) | [View Station Report](#)



MONTH	● PRECIP (IN)	● MIN TMP (°F)	● AVG TMP (°F)	● MAX TMP (°F)
01	10.19	40.2	45.8	51.5
02	7.59	40.2	46.4	52.7
03	7.83	41.5	47.6	53.8
04	5.17	43.1	49.2	55.3
05	3.39	47.0	52.9	58.9
06	1.95	50.5	56.1	61.7
07	0.50	52.8	58.6	64.5
08	0.62	52.9	59.1	65.4
09	1.58	50.0	57.4	64.8
10	4.73	46.0	53.4	60.9
11	10.23	42.7	48.8	54.9
12	11.13	39.7	45.3	51.0

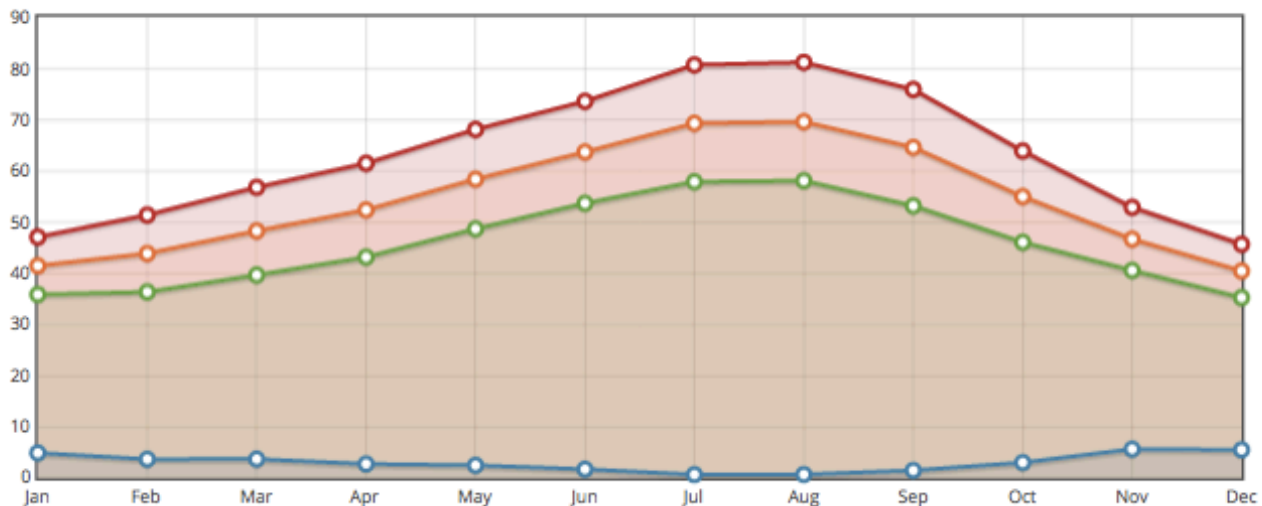
## Monthly Normals

Generated from 1981-2010 Climate Data

<http://www.ncdc.noaa.gov/cdo-web/datatools/normals>

# PORTLAND INTERNATIONAL AIRPORT, OR US

[View Station Details](#) | [View Station Report](#)



MONTH	• PRECIP (IN)	• MIN TMP (°F)	• AVG TMP (°F)	• MAX TMP (°F)
01	4.88	35.8	41.4	47.0
02	3.66	36.3	43.8	51.3
03	3.68	39.6	48.2	56.7
04	2.73	43.1	52.3	61.4
05	2.47	48.6	58.3	68.0
06	1.70	53.6	63.6	73.5
07	0.65	57.8	69.2	80.6
08	0.67	58.0	69.5	81.1
09	1.47	53.1	64.5	75.8
10	3.00	46.0	54.9	63.8
11	5.63	40.5	46.6	52.8
12	5.49	35.2	40.4	45.6

## Monthly Normals

Generated from 1981-2010 Climate Data

<http://www.ncdc.noaa.gov/cdo-web/datatools/normals>